



## Forest Service News Release

Public Information Officer: Stephanie Chapman, (540) 331-1381

District Ranger: Lauren Stull, 540-291-2188

[www.fs.usda.gov/gwj](http://www.fs.usda.gov/gwj)

### Matts Creek Fire Update - Tuesday, November 14 – 5:00 p.m.

**Current Status:** The Matts Creek Fire is 5 miles southeast of Glasgow, Virginia and 5 miles northwest of Big Island, Virginia. The fire is located south of US-501 and the James River within the James River Face Wilderness on the Jefferson National Forest.

The entire fire is on National Forest lands, there are no structures threatened.

**Estimated Acreage:** 1200 acres

**County:** Bedford County

**Containment:** 0% contained

**Date and Cause Reported:** The fire was reported on Sunday, November 12, 2023. The cause of this fire is undetermined.

**Resources on the Fire:** Approximately 80 firefighters and support staff, 1 type-6 engine, 3 Type 1 helicopters, and 2 fixed wing air tankers using water only.

**Wilderness Area Closures:** The James River Face Wilderness and all associated trails, including a section of Appalachian National Scenic Trail, are closed to all public use due to the on-going wildland fire.

The following areas are temporarily closed to allow for public and fire fighter safety:

- Appalachian Trail (FT #1) from James River Foot Bridge to Petite's Gap Road (FR #35)
- James River Foot Bridge Parking Lot
- Matts Creek Trail (FT #4/Old A.T.)
- Piney Ridge Trail (FT #2)
- Balcony Falls Trail (FT #7)
- Gunther Ridge Trail (FT #8)
- Belfast Trail (FT #9)
- Sulphur Springs Trail (FT# 3001)

Use caution and obey all road signs for your safety. Motorists should be alert for firefighter vehicles and smoke.

-more-

### **Fire Restrictions:**

**Stage 1 Fire Restrictions in effect:** For the protection of public health and safety, the following acts are prohibited on all lands administered by George Washington & Jefferson National Forest.

1. Building, maintaining, attending, or using a fire or campfire outside of developed recreation sites.
2. Possessing, discharging, or using any kind of firework or other pyrotechnic device.

Campfires in a Forest Service provided metal fire pit, ring or grill at a developed recreation site are allowed.

### **General Fire Information:**

- Safety of the public and firefighters is always the number one priority when dealing with wildfires.
- Homeowners can learn how to make their homes less susceptible to wildfires by visiting: [www.firewise.org](http://www.firewise.org)

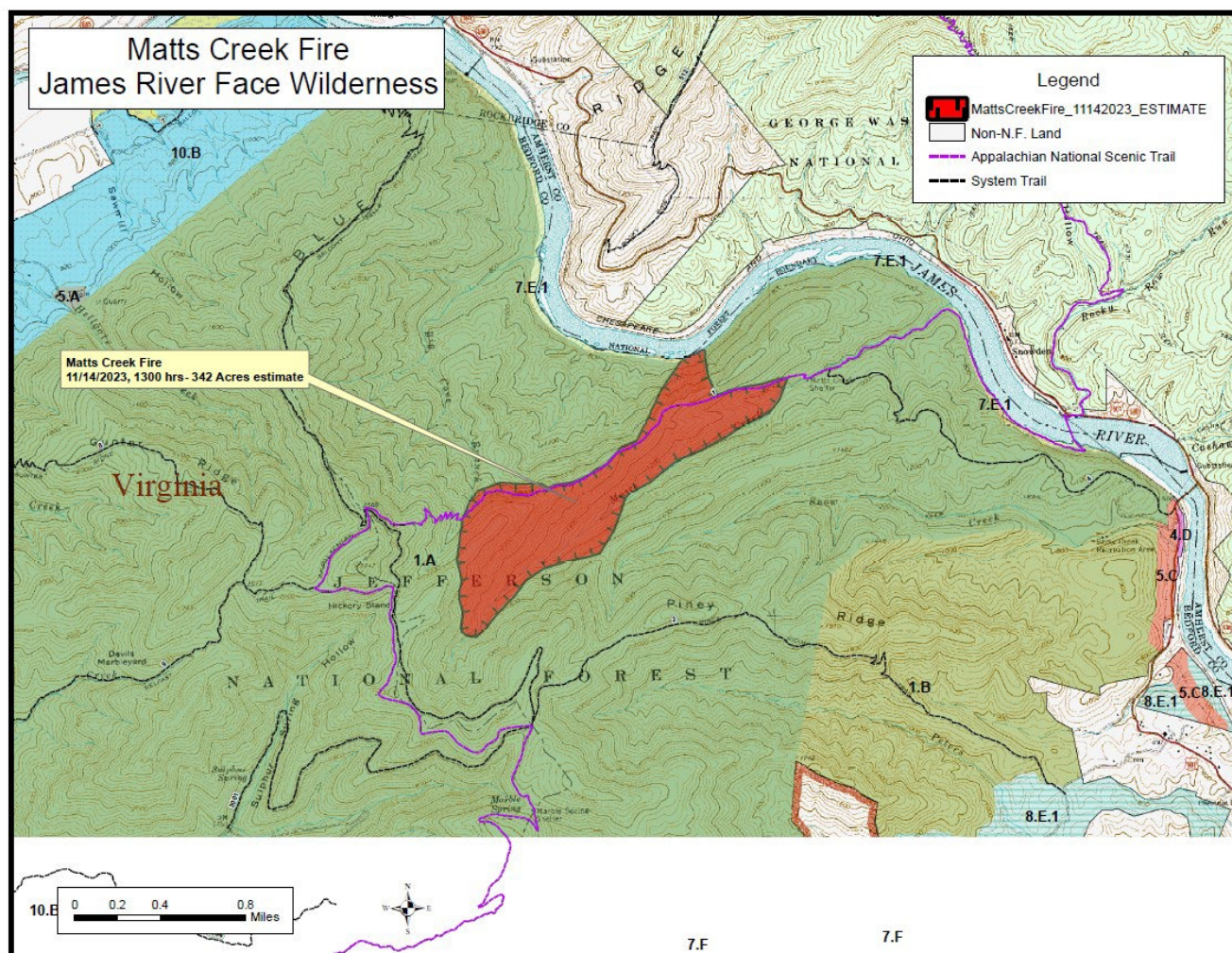
For fire updates: <https://inciweb.wildfire.gov/incident-information/vavaf-matts-creek-fire>

Visit forest information for the George Washington & Jefferson National Forests website [www.fs.usda.gov/gwj](http://www.fs.usda.gov/gwj) or follow us on Facebook: [www.facebook.com/GWJNF](https://www.facebook.com/GWJNF)



*Photo 1: Helicopter flying overhead with bucket; Photo 2: Firefighters hiking to fire line USDA Forest Service images by Willamette National Forest, Module 31 and Santiam Module. .*





Matts Creek Fire Update from 1:00 p.m. USDA Forest Service image.